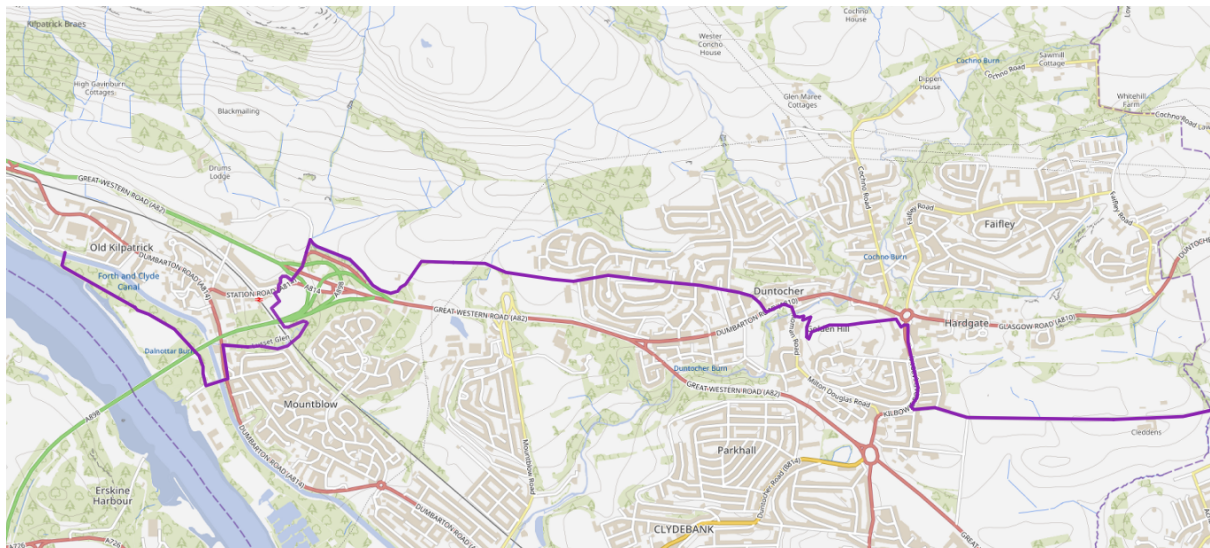


The Antonine Wall Trail: West Dunbartonshire Section (Cleddans to Old Kilpatrick)



Walk information

Start: Cleddans Road: junction with Monymusk place Drumchapel, Glasgow G15 8HR

Getting there: Bus 1C from Glasgow [Plan Your Journey | Traveline](#)

Finish: Old Kilpatrick Distance Stone, 56 Portpatrick Rd, Old Kilpatrick, Glasgow G60 5JR. The Old Kilpatrick Train Station is a short walk through the village.

GPX file for this section: [Download here](#)

Distance and terrain: 7.6km, mainly good tracks. The Clyde Coastal Path / Thomas Wood Path around the cemetery can be muddy and overgrown.

Facilities along the way: Shops and cafes are available in Duntocher just before reaching Goldenhill park. The next facilities are available in Old Kilpatrick.

Pick up any litter and respect the Scottish Outdoor Access Code (<https://www.outdooraccess-scotland.scot/>).

Maps are available at the end of the document.

Step by Step Walk description

Step 1

You are now on Cleddans Road and exactly on the Antonine Wall. There was a fortlet just after the farm on the left.

Continue straight ahead until you reach Kilbowie Road and turn right. Cross at the lights just before the roundabout, where the shops are.

Cross to access Goldenhill Park.

Stay on the upper path, passing a play park. You will reach a first information board with a Roman play park on the left, continue on the main path to reach the Fort. The path then takes you down the hill where the Wall base is visible. Follow the path to the bottom of the hill and the park exit.

Step 2

Exit the park and turn right and then left. Cross Dumbarton Road with care and take Beeches Road, which follows the line of the Wall.

At the end of Beeches Road, take the Thomas Wood Path ahead. There is an information board at the junction. Go straight ahead following the Clyde Coastal Path along the cemetery. The path can be muddy and overgrown. You will be on/ parallel to the Wall until the path dips down to the left. After a short descent it will turn back to the right, parallel to the Wall.

Once you reach Station Road, it is time to take a last detour as the Wall goes through fields and then crosses the A82 further ahead.

Step 3

Coming from the field track, turn left. After the underpass, turn right and then left, still following the Clyde Coastal Path signage.

Once at the Old Kilpatrick station car park, stay on the right and follow the signage for Station and Lusset Glen. Pass under the Erskine bridge and take the path into Lusset Glen.

Stay on the left side of the river and follow it down to the road. You will see a Roman bench and sculpture.

Continue until you reach Dumbarton Road.



Step 4

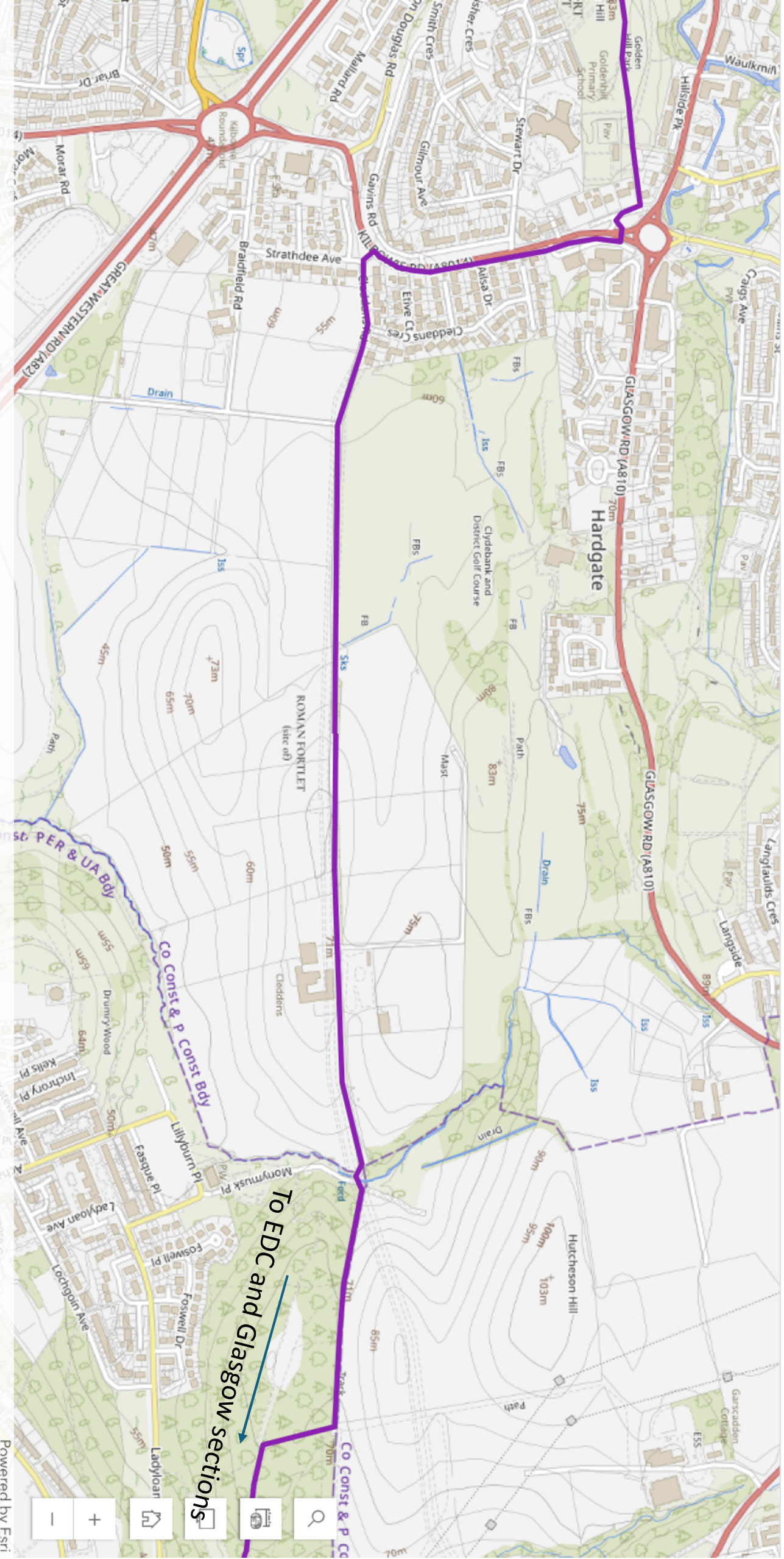
Turn left and cross the road at the lights, then walk over the bridge.

Option 1: turn right onto the towpath immediately after the bridge. Continue straight ahead until you reach the next bridge and turn right to reach the replica distance stone. The last fort on the Antonine Wall is just ahead of you. For a nice view of the Clyde and the probable end of the AW, retrace your steps across the bridge and take the path ahead where you will reach the River Clyde.

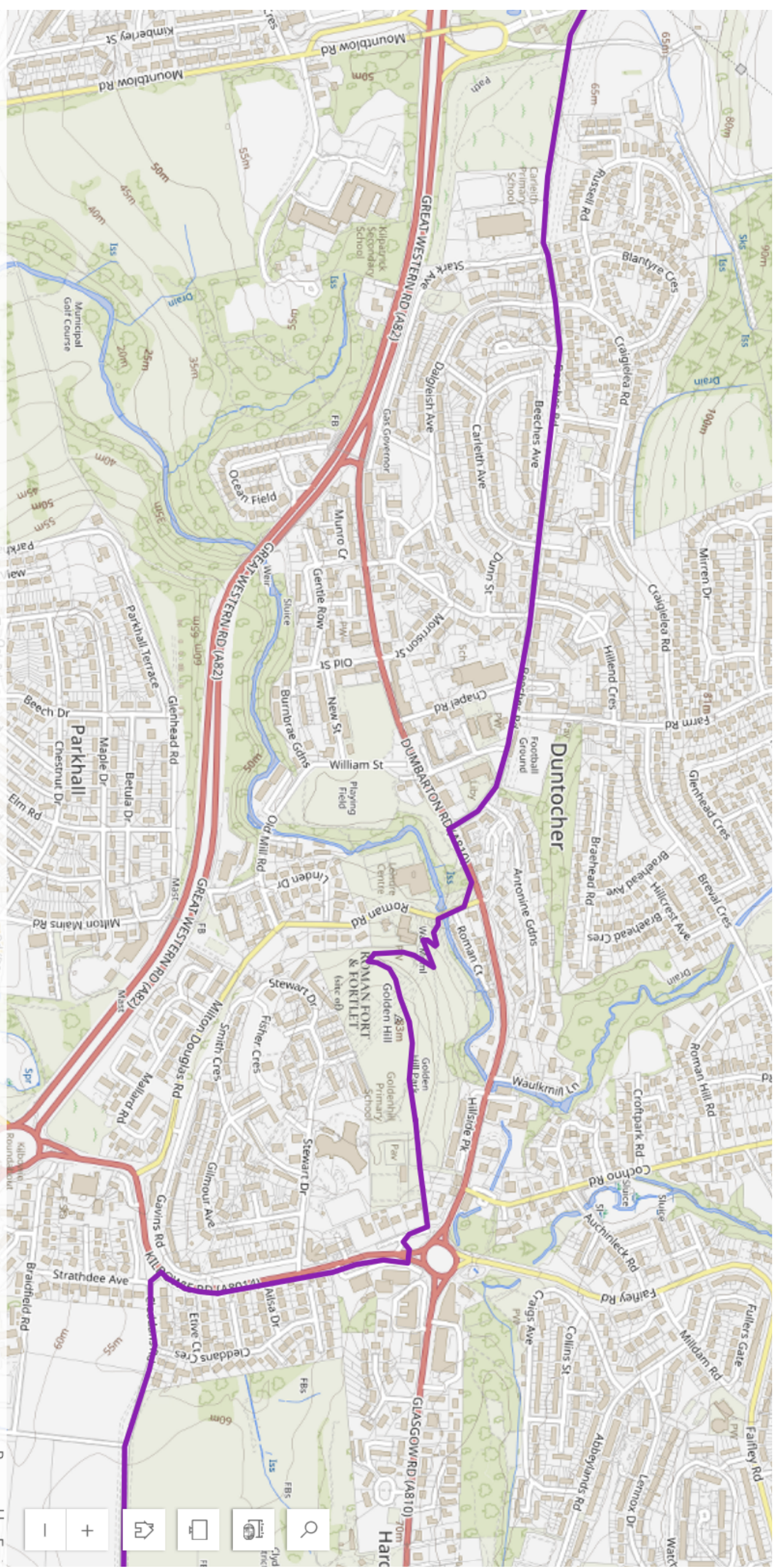
Option 2: after crossing the bridge walk ahead for a few metres and then turn right into the Saltings. Stay on the main track straight ahead until you reach the red Donald's Quay Light. A path on the right takes you to the towpath. Take look across the River Clyde, you are probably standing at the end of the Wall. Take the path to the towpath, cross the bridge to the replica distance stone. The last for on the Wall is just behind the hedge, buried under the bus depot.

Well done you have just walked the Antonine Wall!

The Antonine Wall Trail: West Dunbartonshire Section (Cleddans to Old Kilpatrick)



The Antonine Wall Trail: West Dunbartonshire Section (Cledmans to Old Kilpatrick)



The Antonine Wall Trail: West Dunbartonshire Section (Cledmans to Old Kilpatrick)

