

# The Antonine Wall Trail: North Lanarkshire Section (Castlecary to Croy Hill)



## Walk Information

**Start:** Castlecary Hotel, Castlecary Rd, Castlecary, Glasgow G68 0HD.

**Getting there:** The start point can be reached by bus from Falkirk or Glasgow [Plan Your Journey | Traveline](#)

**Finish:** The walk itself finishes on the B802 Howe Road. If you are finishing your walk here, you can reach Croy Railway Station (1.5km to the left). Auchinstarry Marina and Kilsyth are located to the right. Buses are also available: [Plan Your Journey | Traveline](#)

**GPX file for this section:** [Download here](#)

**Distance and terrain:** 8 km, mainly on forest and farm tracks with one small section along a country road. Terrain can be muddy. Livestock can be present on several sections, so dogs should be kept on their leads.

**Facilities along the way:** There are facilities – Castlecary Hotel and a nearby retail park situated at the start of this section. At the end of the section there are nearby facilities at Auchinstarry Marina and Croy.

Pick up any litter and respect the Scottish Outdoor Access Code ( <https://www.outdooraccess-scotland.scot/> ).

Maps are available at the end of the document.

## Step by Step Walk description

### Step 1

From Castlecary hotel: the path continues at the back of the hotel car park through a metal gate with 2 Roman soldiers. From here follow the signs to Croy. You will be walking on or just next to the Antonine Wall the entire time.

### Step 2

After following the ditch through the fields cross Wyndford Road.

You have the option of continuing straight ahead or crossing the gate on the right and then turning left to walk along the tree line. The ditch is right in the middle and the best view is option 2. The path here might be a bit more challenging. On both options dogs must be kept on their leads.

The two options rejoin again after 1 km.

### Step 3

Continue along the path. You will pass the site of Westerwood Fort. Cross the access to the golf course.

### Step 4

Here you have 2 options. Stay on the right path or cross into the field to the left using the ladder. For option 2, after the ladder and the board turn right to continue. The Antonine Wall ditch lies between the two paths, in the enclosure. Once you reach the end of the field, cross the fence and turn right to rejoin the main path and continue to the left.

Just before the underpass you will see a sign. There is a board in the field above. Please be mindful of sheep grazing and do not enter during lambing season. Walk under the train line and continue to your left along the road. The Wall is on your left until you reach the farm and then just to your right.

### Step 5

Once you reach Dullatur Road continue straight ahead along the pavement. Please be careful as there is no pavement. You will cross the Wall again just after the first sharp bend. Walk for 640 metres until you reach the track on the left signposted Antonine Wall. Take the track.

### Step 6

Walk up the track, you will see the Silvanus sculpture and Arniebog Distance Stone replica ahead of you. There are picnic tables and information boards here. Turn left at Silvanus and follow the track. After 200 meters you will be crossing the Antonine Wall ditch, which is visible on your right, going up Croy Hill. On your left the ditch is less obvious. Turn right and follow the track uphill right. Continue west until you reach the gate.

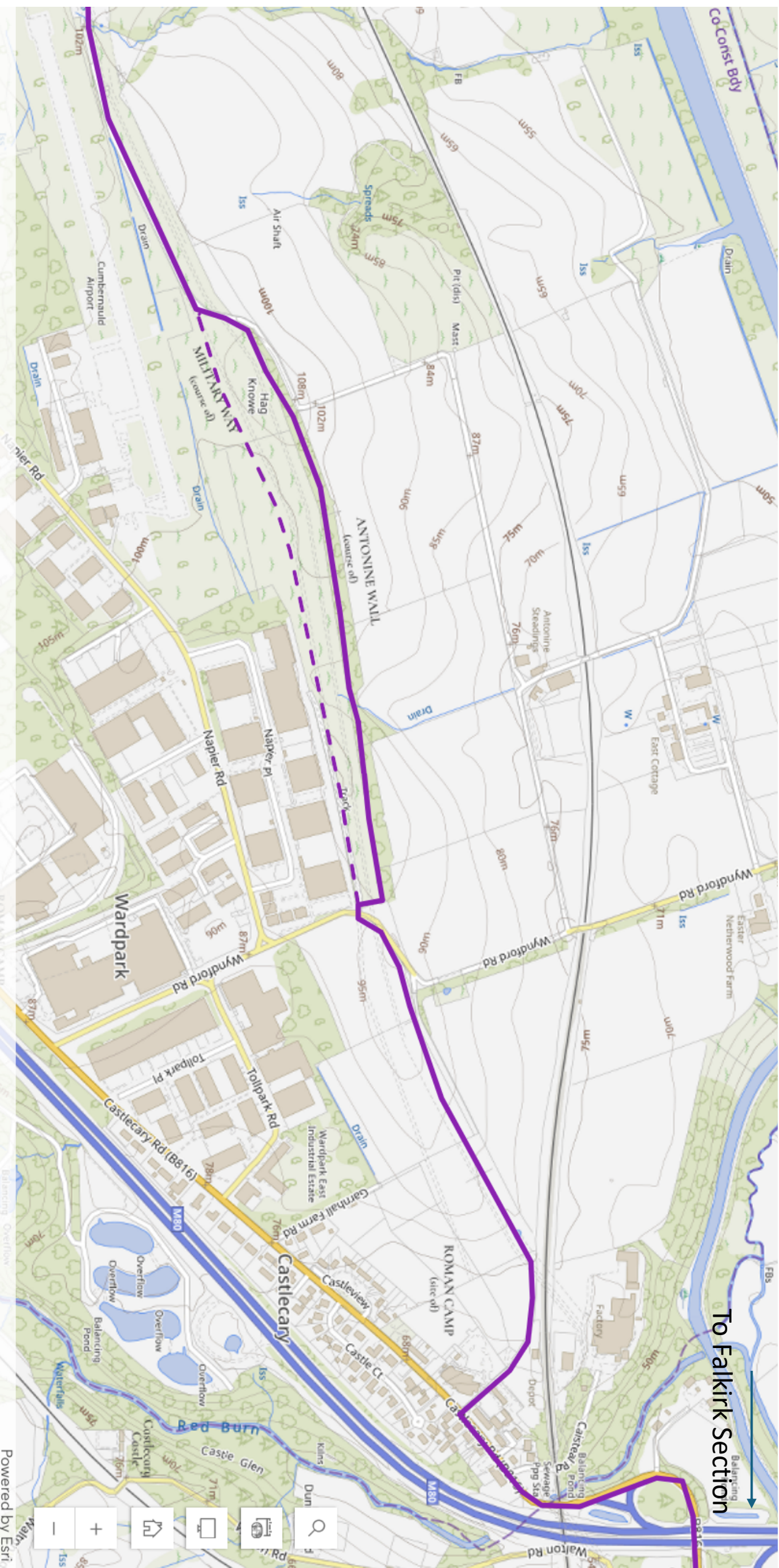


## Step7

Cross the gate and continue. If you turn left on Nethercroy road you will reach Constarry Road that will take you to Croy and Croy Railway Station. Turn right to continue. Alternatively, you can go down to Auchinstarry Marina where you will find restaurant and toilet facilities. If you wish to continue along the Antonine Wall Trail turn left. Cross Howe Road B802 with care to reach the farm track just across and follow the signs to Bar Hill. The Wall crosses the road at the same place.

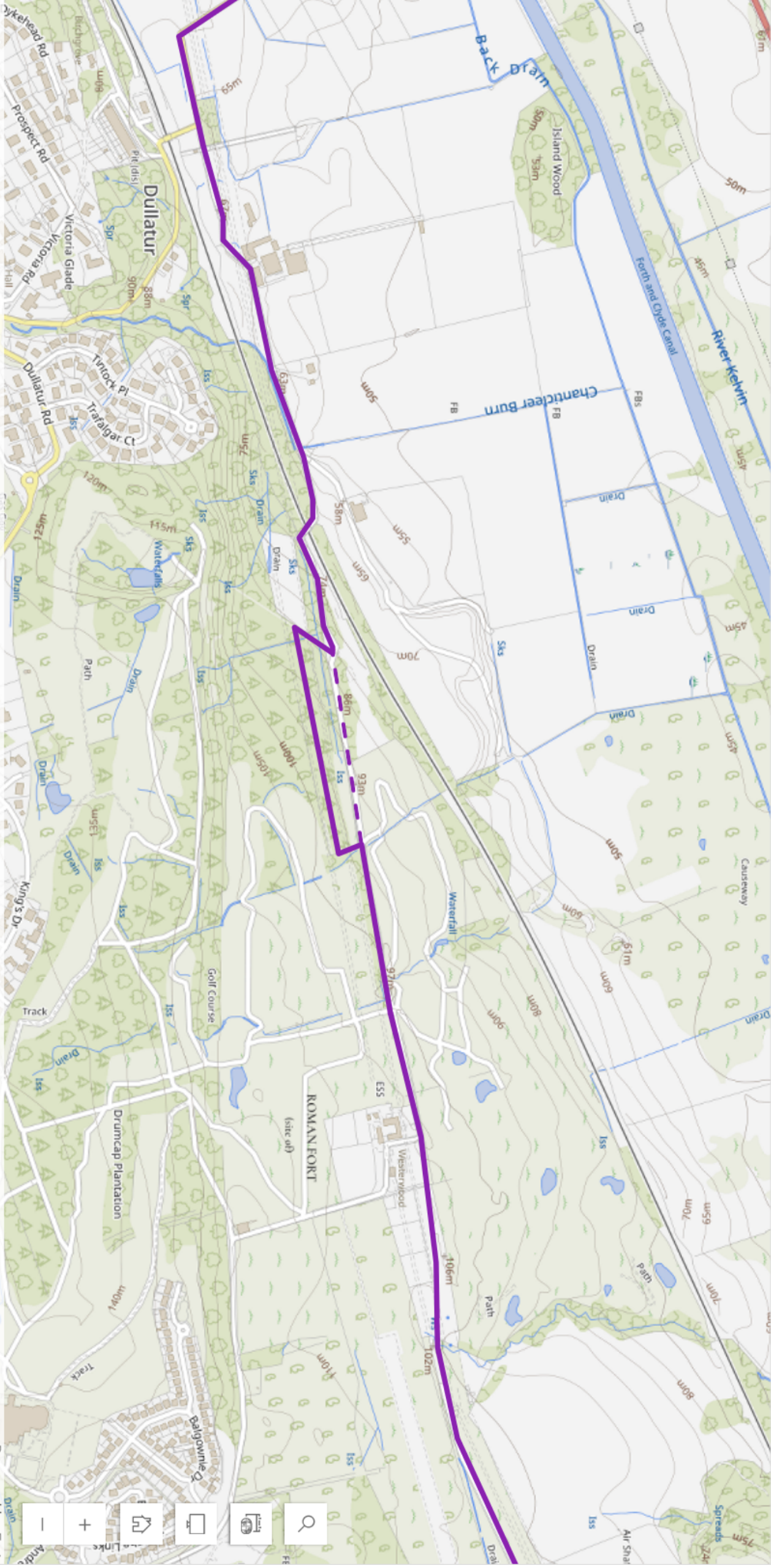
Continue to the East Dunbartonshire/Glasgow section.

# The Antonine Wall Trail: North Lanarkshire Section (Castlecary to Croy Hill)





# The Antonine Wall Trail: North Lanarkshire Section (Castlecary to Croy Hill)





# The Antonine Wall Trail: North Lanarkshire Section (Castlecary to Croy Hill)

